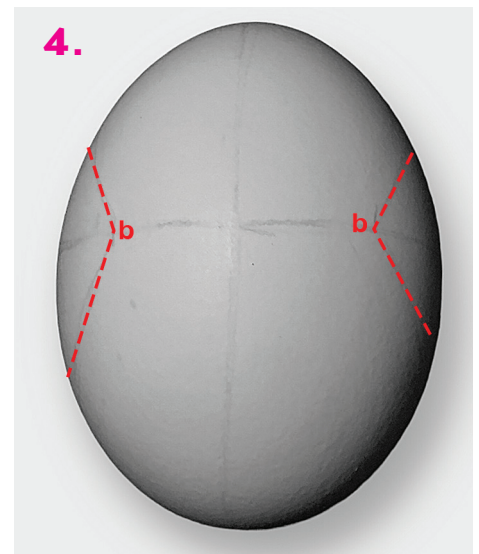
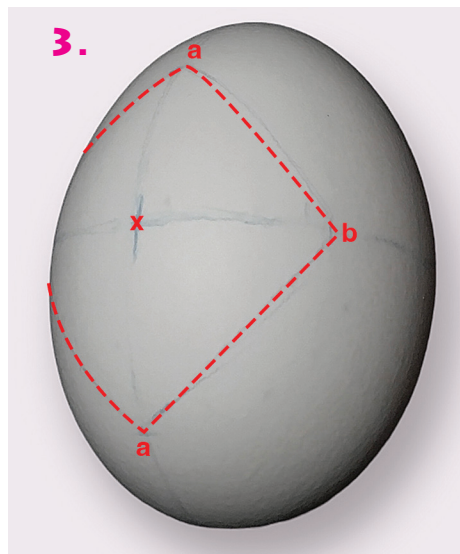
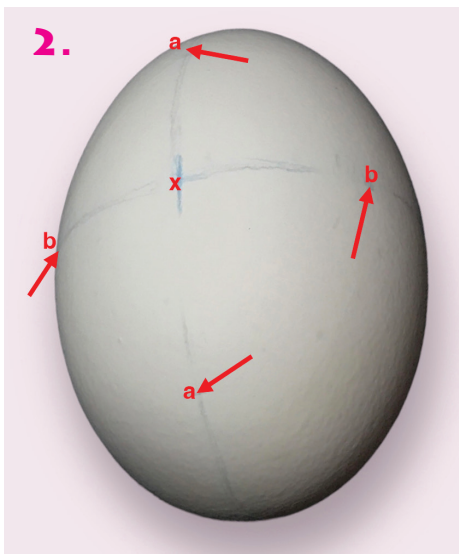
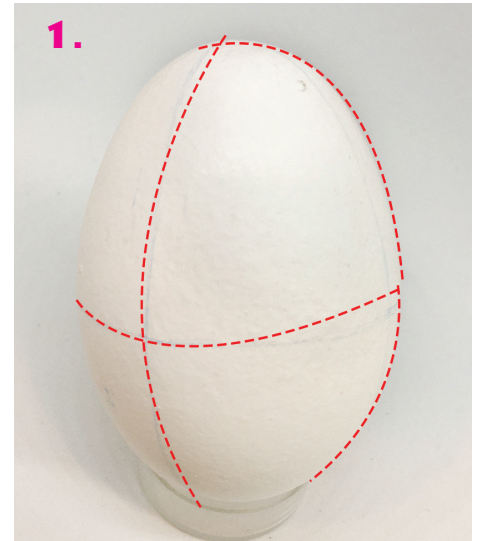
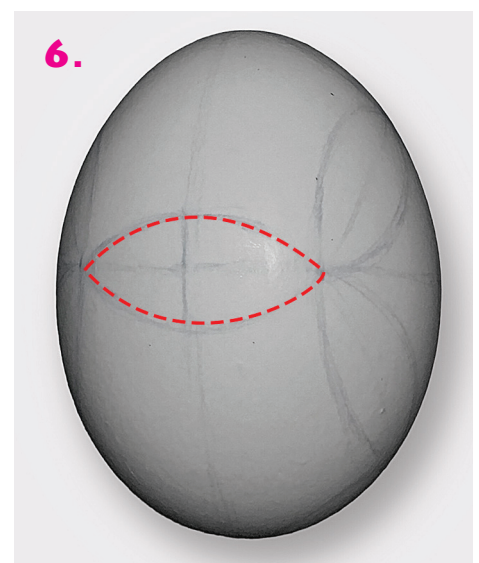
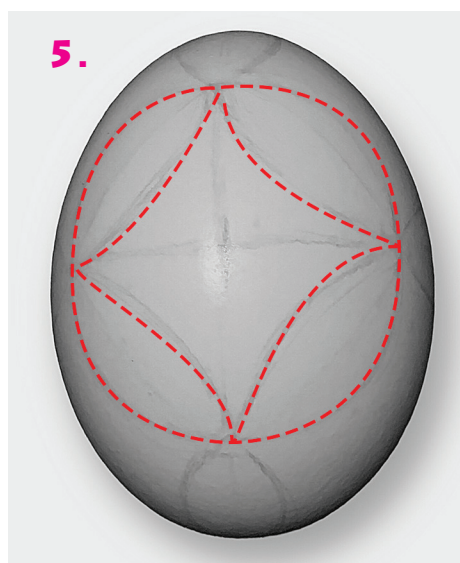


Surfin' Safari

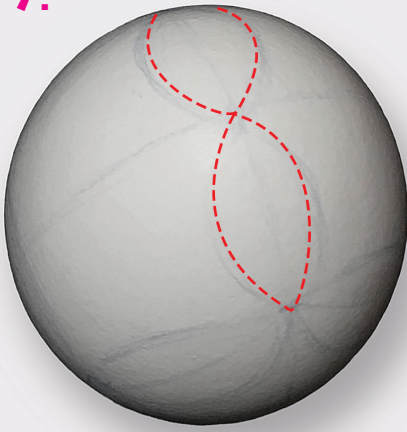
This division features surfboard shapes. The "front" of the design features a circle of surfboards, and the sides have five surfboards around a pentagonal space. Start this division with the Basic 8 division. GREAT DIVISION FOR A TALL EGG!!



1. Basic 8
2. Measure from the equator (x) to the top and bottom and divide in half (a). Use the measurement (x-a) to mark (b) on the equator.
3. Connect a-b-a-b to make a diamond.
4. Make an identical diamond on the opposite side of the egg.
5. Draw surfboards around the sides of the diamonds on both sides.
6. Draw surfboards on the equator between the (b) corners of the diamonds.



7.



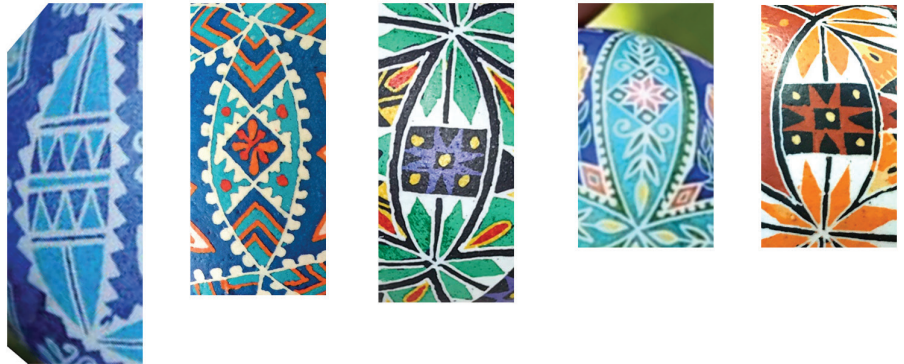
7. Draw two surfboards across the top of the egg, from the top of one diamond on the front (point a) and likewise across the bottom.

At this point, you will probably notice that the two across the top are a little smaller than the ones around the middle diamond and the ones along the equator. You can adjust these to some extent by making the diamonds on the front and back wider than they are tall, but the pentagons will never be perfect. The taller the egg, the longer the surfboards across the top and bottom, and therefore, the more regular the pentagons.

Wax in the same order as you penciled: first the surfboards making the circles, front and back; then the ones on the equator, and finally, the tops and bottoms.

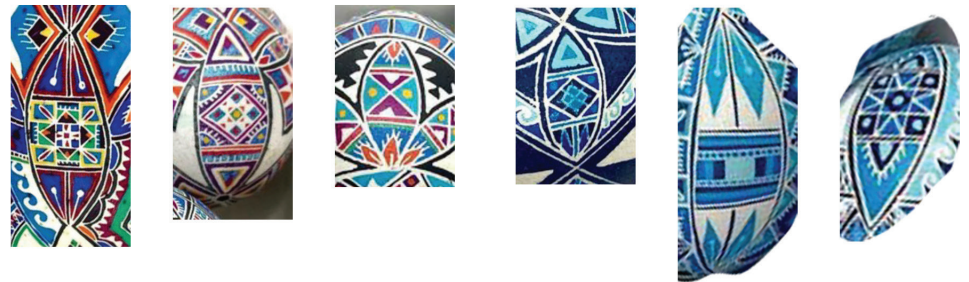
Fill the spaces with designs.

SOME SURFBOARD DESIGNS

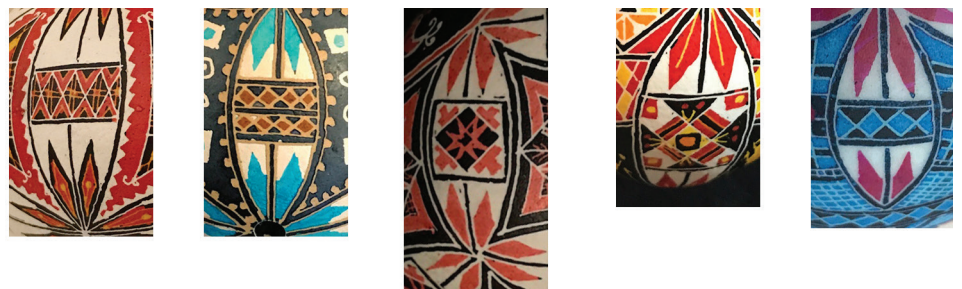


Left to right: Philomen Ovodonos, Dore Douty, Ann Anzini, Katherine Alexander and a color variation of Ann Anzini's.

Another example:



All of these are from Good Harvest Pysanky, Emma Plumb, of Canada. She is the Queen of Surfboards!



These are some I've done, influenced by all of the above or even copied but not recorded.